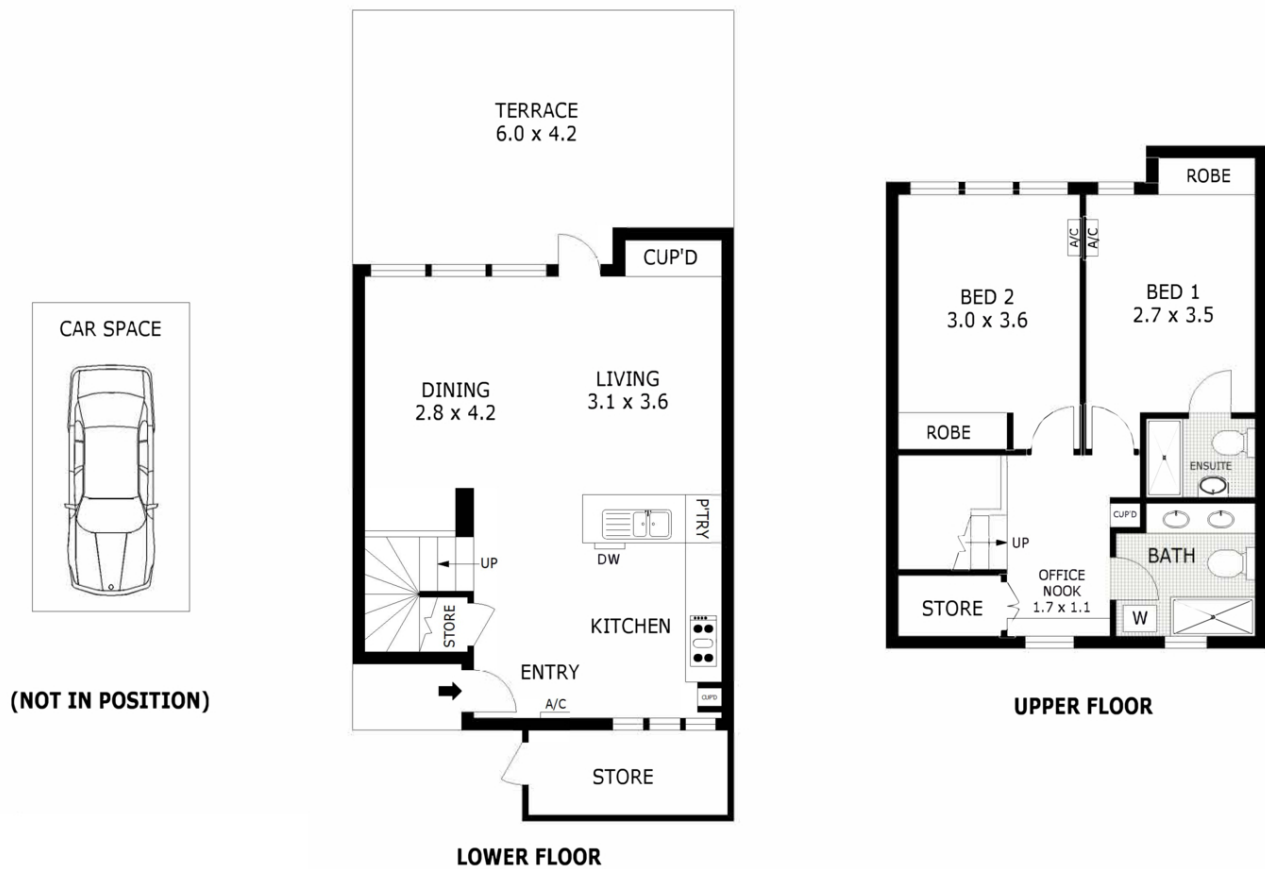


SOUTH MELBOURNE 62A Napier Street



CAYZER

SOUTH MELBOURNE 62A Napier Street



TOWNHOUSE LIVING PERCHED AMONG THE GUM TREES

- Huge sunny terrace perched in the treetops
- Study nook and two bathrooms
- Direct access to Eastern Reserve playground and centrally located between Albert Park Lake, Botanic Gardens and South Melbourne Market.

Perched on the first floor with nothing above it, this spacious home is filled with light all day long from opposing east and west windows and enjoys beautiful vistas of the canopy that's just outside. Comprising an open plan living and dining room with expansive windows onto a large terrace to enjoy the sound of the rustling leaves in the breeze and an ample kitchen with stainless steel appliances including DW. Also features a fitted study nook with hidden storage, RC/AC and undercover parking.

2 2 1

AUCTION Saturday 28th May at 10.30am

Inspection As advertised or by appointment

Contact Charlotte Broussard 0403 451 899
Simon Carruthers 0438 811 601
Michael Szulc 0417 122 809

Mel Ref 57 H2



CAYZER

Albert Park 330 Montague Street 03 9699 5999
Port Melbourne 370 Bay Street 03 9646 0812

cayzer.com.au

Every care has been taken to ensure the information contained in this document is accurate. The diagrams/plans are a representation only and are not to scale. Interested parties should seek independent legal advice. Cayzer Real Estate Pty Ltd does not accept any responsibility or liability as a result of the information provided in this document. If your property is currently listed for sale with another agent, please disregard this notice. | Cayzer Real Estate Pty Ltd |